

# emerge 2012

A SHOWCASE OF RISING TALENTS IN KILN-GLASS

Published on the occasion of the biennial juried kiln-glass exhibition  
at Bullseye Gallery in Portland, Oregon  
April 4–June 23, 2012

## EMERGE 2012

The call for entries for the *Emerge 2012* exhibition opened on October 1, 2011. Entrants submitted work through an online application service until the deadline of December 7, 2011.

This year's competition attracted over three hundred fifty entries from more than thirty countries. In early January, a panel of three jurors undertook the massive task of selecting a group of finalists by reviewing several thousand digital images of artwork. In addition to images, the jurors were able to view the entrants' names, the titles and dimensions of their works, and the techniques used to create the works.

The three jurors for this year's competition were Laura Addison, Silvia Levenson, and Klaus Moje. They performed their duties with great professionalism, collegiality and care, evaluating each artist for excellence of craftsmanship, design and creativity. After selecting the group of finalists, the jurors chose one piece of artwork by each finalist to be included in the exhibition. In late March, once the selected pieces had been installed, the jurors gathered to review the assembled work and to choose the category award winners.

We wish to thank the jurors for helping to make *Emerge 2012* an inspiring collection that reflects the high standards of today's artist working in kiln-glass. And we wish to encourage entrants who did not qualify as finalists this year to continue their efforts to make good work.

We would also like to thank everyone who attended the *Emerge 2012* opening reception at Bullseye Gallery.

This year, selected award-winning works have been scheduled to travel to the New Mexico Museum of Art in Santa Fe and to Bullseye Resource Center Bay Area in Emeryville, California, after the Portland show closes.

### ACADEMIC INSTITUTIONS

One of the missions of the *Emerge* exhibition is to provide support and acknowledgement to art colleges and university art departments teaching kilnformed glass as a sculptural medium. Finalists who qualified to compete for the Academic Award are current or recent students at these institutions:

- University of South Australia, Adelaide, Australia
- Rochester Institute of Technology, New York, United States
- Royal College of Art, London, England
- University of Miami, Florida, United States
- Kent State University, Ohio, United States
- Kookmin University, Seoul, South Korea
- European Center for Research and Training in Glass Arts (CERFAV), Vannes-le-Château, France
- University of Sydney, Sydney, Australia





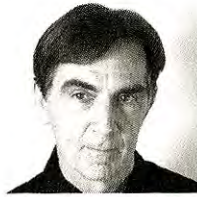
Miri Admoni  
page 22



Racquel Austin-Abdullah  
page 31



Rhoda Baer  
page 36



Joe Bartholomew and Ryan Tanner  
page 38



Orion Becker  
page 30



Karen Bexfield  
page 35



Courtney Boyd  
page 34



Victoria Calabro  
page 12



MalPina Chan  
page 28



Sukyung Chung  
page 27



Julie Dean  
page 29



Clark F. Decapite, Jr.  
page 31



Karina Del Savio  
page 33



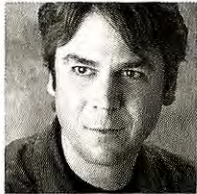
Thomas Donaldson  
page 36



Janet Foley  
page 24



Elizabeth Fortunato  
page 14



Christopher Gibson  
page 25



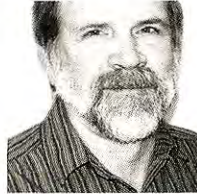
Claudia Golzman  
page 28



Jennifer Halvorson  
page 32



Emilie Haman  
page 10



Carole and William Hutchison  
page 24



Sacha Janzee  
page 27



Mikyoung Jung  
page 26



Marzena Krzeminska  
page 25



Ester Luesma and Xavier Vega  
page 20



Karen Mahardy  
page 16



Shandra McLane  
page 38



Rita Neumann  
page 32



Alyssa Oxley  
page 35



Denise Popper  
page 11



Steven A. Ramsey  
page 30



Luisa Restrepo  
page 29



Antonio Sciacca and Eduardo Nieto  
page 39



Cathryn Shilling  
page 40



Amanda Simmons  
page 37



Sayaka Suzuki  
page 18



Sarah F. Vaughn



Amy Westover



Damon Yu

ARTISTS





## SHANDRA MCLANE

United States

*My work creates beauty by breaking down the natural world into discernible patterns. I work with kilnformed glass and a printmaking process known as vitreography. My glasswork is assembled with meticulous attention to detail by focusing on the firing processes. After the first firing, I use the glass slab as a matrix for printing, using a variety of printmaking techniques. The glass continues on for multiple firings and coldworking. I embrace the process of designing and fabricating a piece of glasswork or a print. My work is an ongoing practice—each finished piece is a catalyst for the next.*

Shandra McLane has been working with glass and printmaking since 1995 and is currently exploring kilnformed glass and vitreography. Her earlier work, which integrated silk screening on contemporary glass furniture, was shown at New York's International Contemporary Furniture Fair. McLane has studied at the Rhode Island School of Design and Pilchuck Glass School, where she also worked as the print shop coordinator, assisting artists Italo Scanga and Lino Tagliapietra.

*Untitled vessel and vitreography print, #2, 2011. Glass and vitreography print, 8 x 12.125 x 12.125 inches and 23.25 x 21.25 x .625 inches.*

emerging 2012